

Stromwandler BUSBAR PASSING C.T.

Technische Daten

Material, selbstverlöschend
Kunststoffgehäuse
Nennfrequenz
Bemesungsspannung
Nennspannung
Testspannung
Isolationsklasse
Schutzgrad
Überstrom, dauernd

Technical data

self extinguishing
thermoplastic material
operating frequency
insulation reference
voltage
test voltage
insulation
protection degree
continuous overcurrent
secondo/according to
UL94-V0
50±60 Hz
0,72 kV
3 kV x 1' 50 Hz
classe E
IP 30
1,2 In
80 In
2.5 x I th
N ≤ 5
-25 +50 °C
-40 +80 °C
IEC/EN 60044-1,
VDE, BS, UTE

Thermischer Überstrom (I th)
Dynamischer Überstrom (I dyn)
Überstromfaktor
Betriebstemperatur
Lagertemperatur
Konformität

MESSWANDLER, SECUNDÄR 5 A - MEASURING C.T. SECONDARY 5 A

PRIMÄRSTROM PRIMARY CURRENT	BÜRDE - BURDENS		typ code
	cl 0,5	cl 1	
A	VA	VA	
1000	25	50	TAT2251K0X05
1200	30	60	TAT2251K2X05
1500	35	70	TAT2251K5X05
2000	40	80	TAT2252K0X05
2500	50	100	TAT2252K5X05
3000	70	120	TAT2253K0X05
4000	80	150	TAT2254K0X05
5000	100	180	TAT2255K0X05
6000	100	180	TAT2256K0X05
8000	100	180	TAT2258K0X05
10000	100	180	TAT22510KX05

SCHUTZWANDLER, SECUNDÄR 5 A - PROTECTION C.T. SECONDARY 5 A

PRIMÄRSTROM PRIMARY CURRENT	BÜRDE - BURDENS			typ code
	5 P 5	5 P 10	5 P 15	
A	VA	VA	VA	
1000	30	10	5	TAT2251K0K05
1200	35	12	6	TAT2251K2K05
1500	40	15	8	TAT2251K5K05
2000	60	20	10	TAT2252K0K05
2500	70	20	10	TAT2252K5K05
3000	80	25	12	TAT2253K0K05
4000	100	30	15	TAT2254K0K05
5000	40	15	5	TAT2255K0K05
6000	40	15	5	TAT2256K0K05
8000	40	15	5	TAT2258K0K05
10000	40	15	5	TAT22510KK05

Alle Wandler in der Tabelle auch als Sekundär 1A, bei gleicher Bürde lieferbar.

In der Typnummer die letzte Ziffer in "1" ändern.

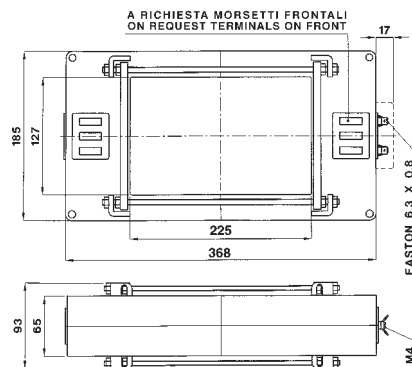
Per ottenere il codice prezzo dei TA con secondario 1A è necessario sostituire l'ultima cifra dei codici riportati nelle tabelle con la cifra 1.

-
-
-
-

All C.T.'s indicated in tables are available also with secondary 1A; the relevant burdens remain unchanged. The price code for C.T.'s with secondary 1A has the last digit equal to 1.

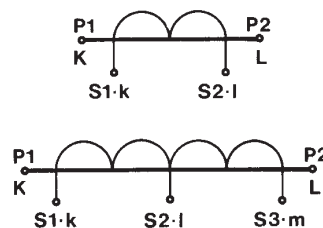
On request are available versions with intermediate tapping on secondary winding, allowing the use of the C.T. with two different primary currents. Burdens of the relevant ratio are listed in the table.

serie **TAT225...** 225x127
model



TAT225...
kg. 3 ÷ 5

Anschlussbild
PRIMARY AND SECONDARY CONNECTIONS MARKING



ZUBEHÖR

-Befestigungsset für Cu - Schine

SUPPLIED ACCESSORIES

- built-in busbar fixing system
- clamping terminals with faston
6,3 x 0,8 mm for secondary and short-circuit