



Technische

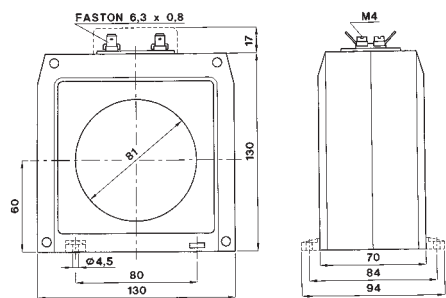
selbstverlöschend
 Thermoplastik
 Nennfrequenz
 Nennspannung
 Spannung
 Testspannung
 Isolationsklasse
 Schutzart
 Überstrom, dauernd
 Thermischer Strom
 Strom (I th)
 Dynamischer Überstrom
 (I dyn)
 Sicherheitsfaktor
 Betriebstemperatur
 Lagertemperatur
 gefertigt entsprechend

Daten

self extinguishing
 thermoplastic material
 operating frequency
 insulation reference
 voltage
 test voltage
 insulation
 protection degree
 continuous overcurrent
 rated short-time thermal
 current (I th)
 rated dynamic
 current (I dyn)
 safety factor
 operating temperature
 storage temperature
 manufactured according to

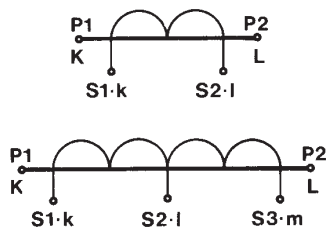
Technical data

secondo/according to
 UL94-V0
 50±60 Hz
 0,72 kV
 3 kV x 1' 50 Hz
 classe E
 IP 30
 1,2 In
 80 In
 2,5 x I th
 N ≤ 5
 -25 +50 °C
 -40 +80 °C
 IEC/EN 60044-1,
 VDE, BS, UTE



TAT080...
 kg. 1,2 ÷ 1,7

PRIMARY AND SECONDARY CONNECTIONS MARKING



SUPPLIED ACCESSORIES

- C.T. wall mounting fixing set (2 pcs)
- clamping terminals with faston 6,3 x 0,8 mm for secondary and short-circuit

MESSWANDLER, SEKUNDÄR 5 A - MEASURING C.T. SECONDARY 5 A

PRIMÄRSTROM PRIMARY CURRENT	PRESTAZIONI - BURDENS		
	cl 0,5	cl 1	cl 3
A	VA	VA	VA
400	4	8	15
500	6	12	20
600	10	20	30
800	15	30	50
1000	20	40	60
1200	30	60	100
1500	40	80	150
2000	50	100	150
2500	60	120	200

SCHUTZWANDLER; SEKUNDÄR 5 A - PROTECTION C.T. SECONDARY 5 A

PRIMÄRSTROM PRIMARY CURRENT	PRESTAZIONI - BURDENS	
	cl 5 P 5	cl 5 P 10
A	VA	VA
400	4	1,5
500	5	1,5
600	6	2
800	6	2,5
1000	6	2,5
1200	6	2,5
1500	6	2,5
2000	6	2,5
2500	6	2,5

All C.T.'s indicated in tables are available also with secondary 1A; the relevant burdens remain unchanged.

The price code for C.T.'s with secondary 1A has the last digit equal to 1.

On request are available versions with intermediate tapping on secondary winding, allowing the use of the C.T. with two different primary currents. Burdens of the relevant ratio are listed in the table.