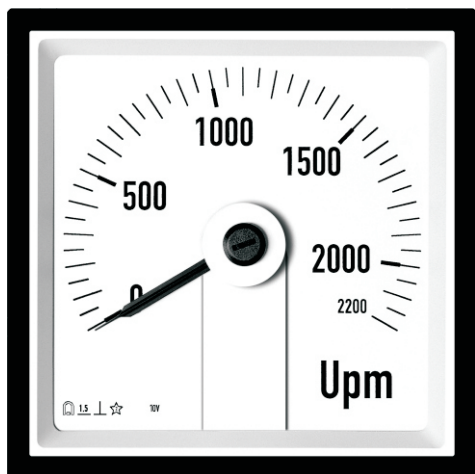


MOVING COIL INSTRUMENT, 240° scale KPQ



- Measuring of DC current or voltage
- DIN size 48x48, 72x72, 96x96, 144x144mm
- Class 1,5

Application

The KPQ 96 is a measuring instrument to indicate measured variables (f.i. rpm or rudder angle ...) in installations of ships. The KPQ is a measuring instrument to indicate DC signals with a moving coil system.

Masuring range

Typ	size(mm)	range - V/A ¹
Voltmeter:		
KPQ 48	48 x 48	60mV...600V
KPQ 72	72 x 72	60mV...800V
KPQ 96	96 x 96	60mV...800V
KPQ 144	144x 144	60mV...800V
Current meter:		
KPQ 48	48 x 48	1mA...600mA ² 4...20mA
KPQ 72	72 x 72	1mA...5-10-15-40A ^{2K} 4...20mA
PQ 9K6	96 x 96	1mA...5-10-15-40A ² 4...20mA
PQ 144	144 x 144	1mA...5-10-15-40A ² 4...20mA

1) Standard measuring ranges: 1- 1,5- 2,5- 4- 6, Vielfache von 10

2) Higher ranges: With standard shunt:
60mV oder 150mV

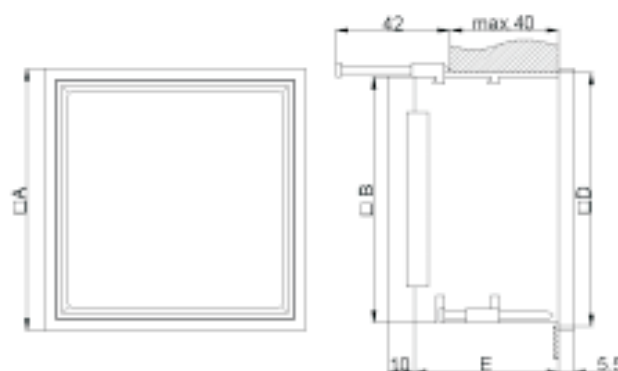
Scale Design

Scale design according to customers order

Technische Daten

Scale:	Exchangeable scale (Attention!! disconnect supply befor exchanging scale)
Accuracy:	Classe 1,5 EN 60051 IEC 51
Consumtion:	Current meter 60mV...0,5V
Casing:	Plastic, self-extinguishing (ULV94/V0)

Dimension



	48x48	72x72	96x96	144x144
A Size	48x48	72x72	96x96	144x144
B Inside	42,8x42,8	66,5x66,5	90x90	136x136
D Cutout	45x45	68x68	92x92	138x138
+ Tolerance	0,3	0,4	0,4	0,5
E deep	53	53	53	53

Order Data- Example

Current meter, Typ, Size, Scale, Measuring range
KPQ 96, 0-2200RPM, 0-10V